

## 4200-IR Refrigerant Gas Monitor

Flexible monitoring and control for refrigerant gas leaks in machinery chiller rooms of residential, commercial and industrial buildings.

The 4200-IR offers an intelligent solution to monitor for refrigerant leaks in machinery chiller rooms. The central panel offers full user interface, control setup and relay interlocks for ventilation control and gas leak alarms. Sleek remote alarm panels for outside the room and point of source infrared sensors complete the package.

- designed to CSA B52 and ASHRAE Std 15 guidelines
- up to 4 sensor inputs
- touch screen interface
- relays for ventilation, BAS and boiler control
- ventilation and chiller override switches included



**Main Panel**



**Remote IR-200 Sensor**



**Remote Alarm Panels**

# 4200-IR

## Standard Features

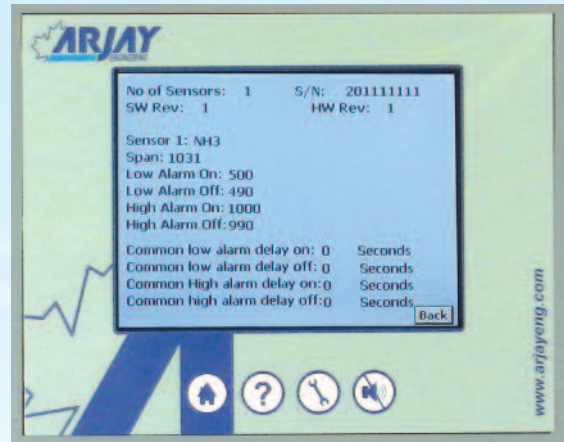
- wall mount Type 4 painted steel enclosures
- central panel with audio and visual alarms
- remote panels with audio and visual alarms
- touch screen with ppm concentration
- alarm acknowledge and test buttons
- relay override switches on all panels
- user defined password protection
- infrared sensor technology
- up to 4 sensor inputs
- up to 5 remote panels

## Technical Specifications - Panel

Operating Temperature	0° to 40°C, indoor use
Power Input	24 vdc, 110 vac, or 220 vac
Enclosure Rating	Type 4
Relays	4 x SPDT, dry rated 240 vac
Display	touch screen, full colour on main, monochrome on remote

## Technical Specifications - Sensor

Technology	non-dispersive infrared
Range	Group A 0-1,300 ppm Group B 0-300 ppm
Resolution	1 ppm
Typical Target Gases	R11, R123, R134A, R22, R404, R717 (Ammonia)



Full diagnostics and setup functions

